



Pinelands Conservation Fund Priorities, Funding & Schedule



Policy & Implementation Committee
April 25, 2025



Objective: Permanent Land Protection

51% of Pinelands Area is preserved

Mostly in PAD, SAPA, and FA

Annual incremental progress

Section 502 & 21
Acquisition Target Areas

PCF Background

- PCF established for Permanent Land Protection goals
- Acquisition Target Areas
 - Former funding source through Federal funding targeting Section 502 areas expended
 - PCF funding of \$9.5 M to preserve 8,971 acres to date
- \$3 M available in PCF (SJTA MOA 2019-2024)
- Shared at Summit



Land Acquisition Priorities

- “Traditional” acquisitions
 - 502 Fund Areas
 - 21 Acquisition Target Areas
- Grassland habitats (not exclusive)
- Support climate mitigation strategies
 - Fire hazard
 - Flood hazard
 - Carbon sequestration

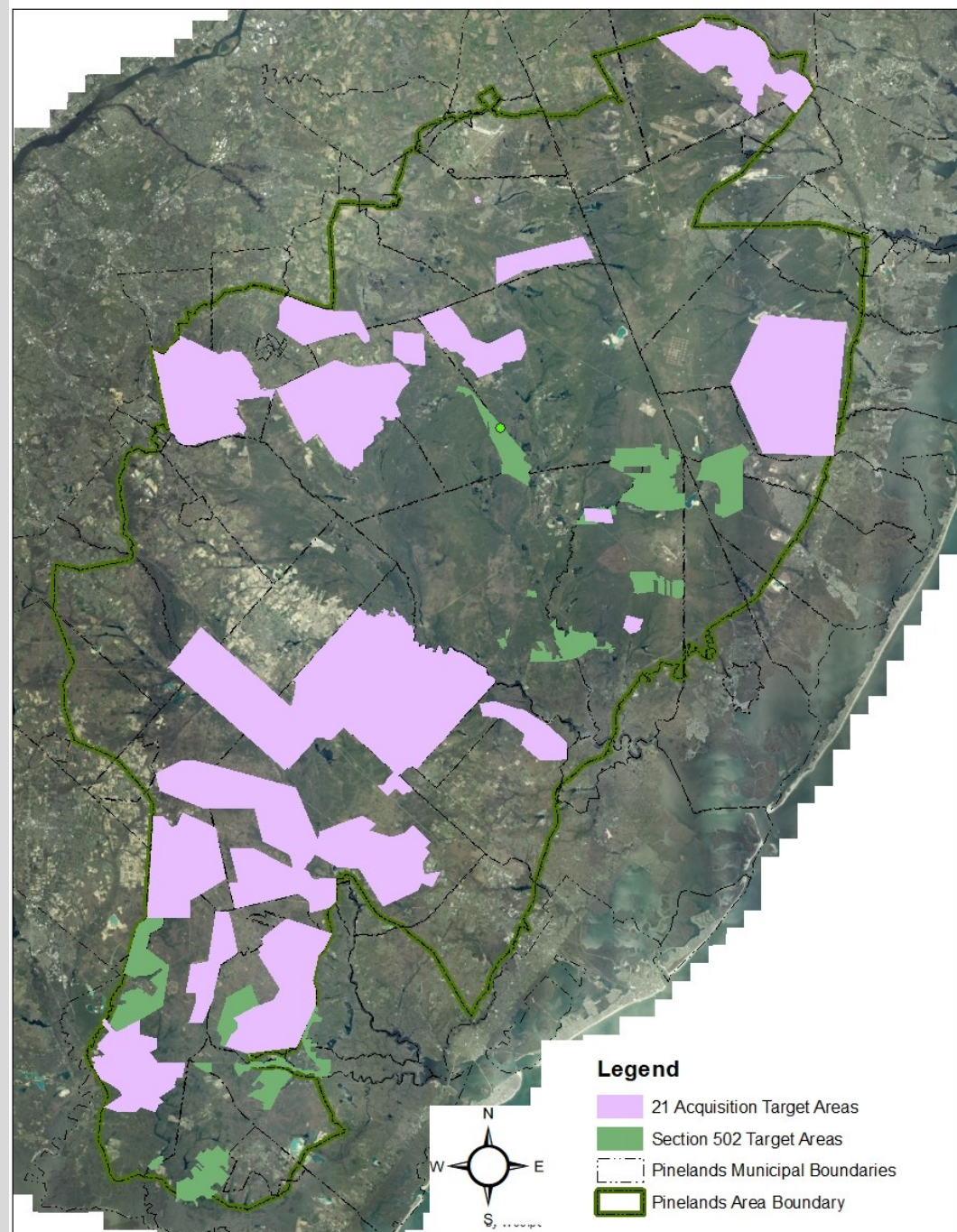


Section 502 & 21 Acquisition Target Areas

All areas identified by
Commission

21 Areas expanded for
climate objectives in
2024

Shared with NJ
Blueprint

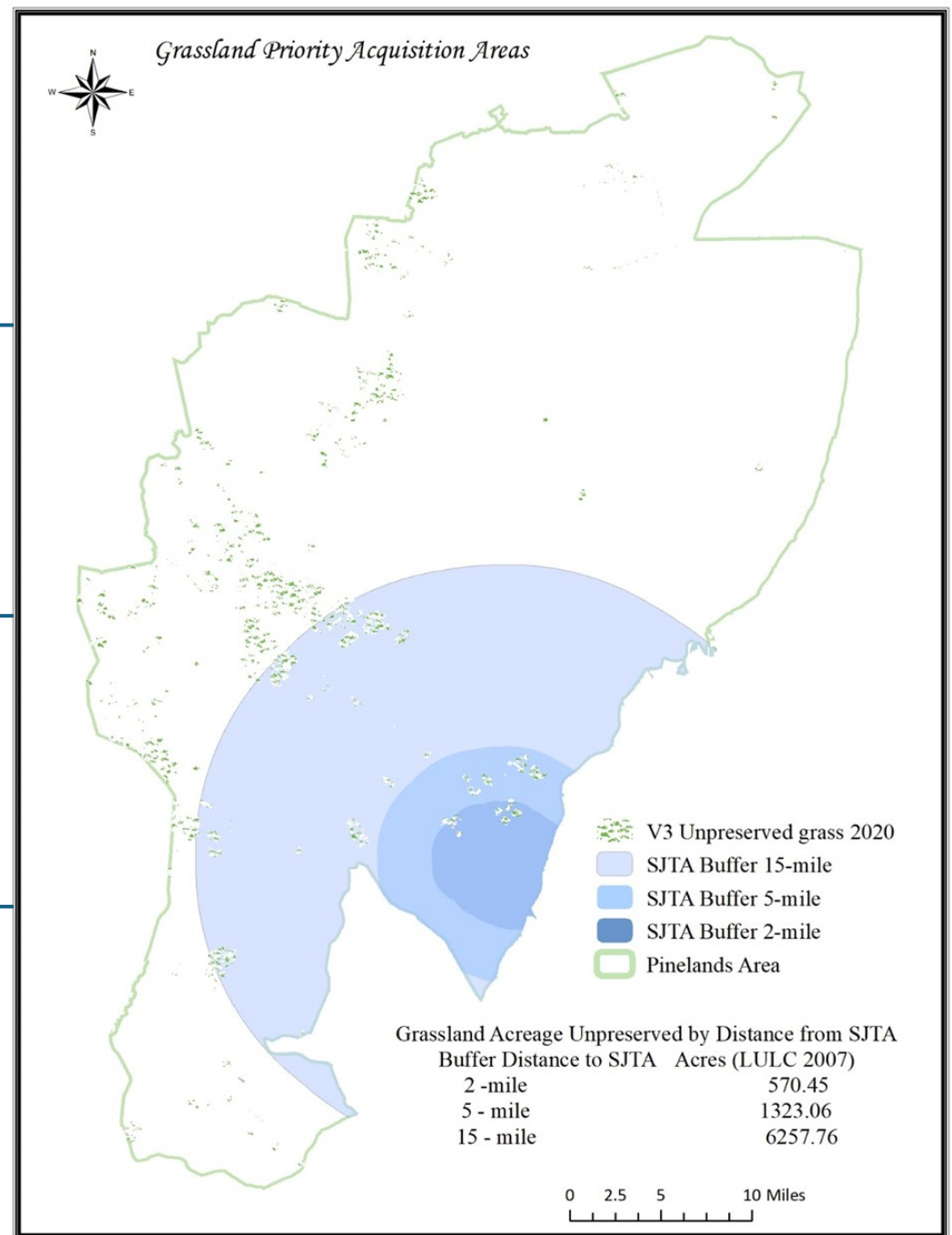


Grassland Focus Areas

SJTA funding source

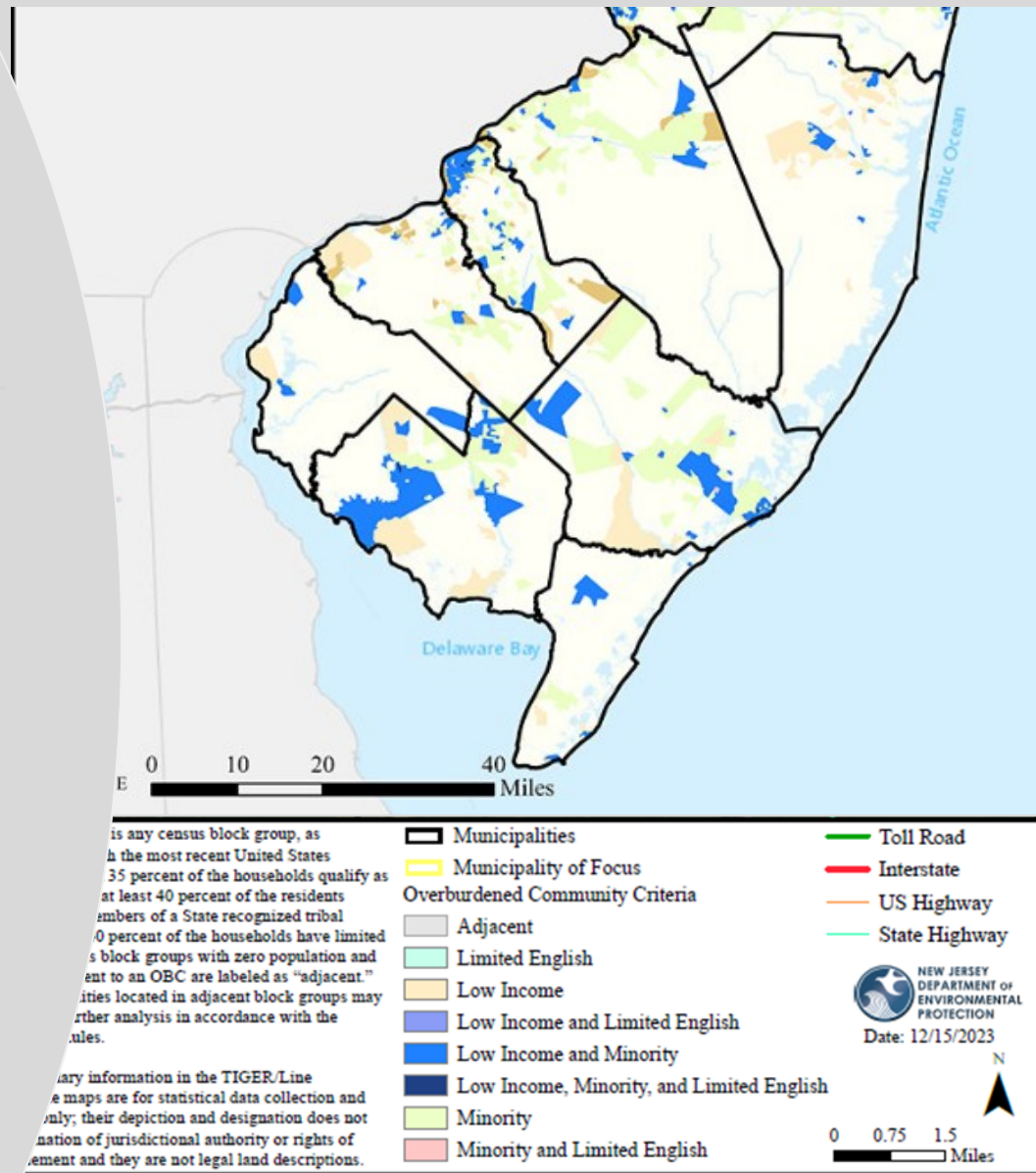
Projects outside of grassland are acceptable

Map reflects DEP Landscape data and proximity to SJTA



Environmental Justice Communities

- DEP website for information
- Green Acres only credits EJ/OBC in the same census block
- For PCF, credits for anywhere in the same municipality as an EJ/OBC census block
- Numerous locations throughout Pinelands Area



Project Evaluation Matrix 2025

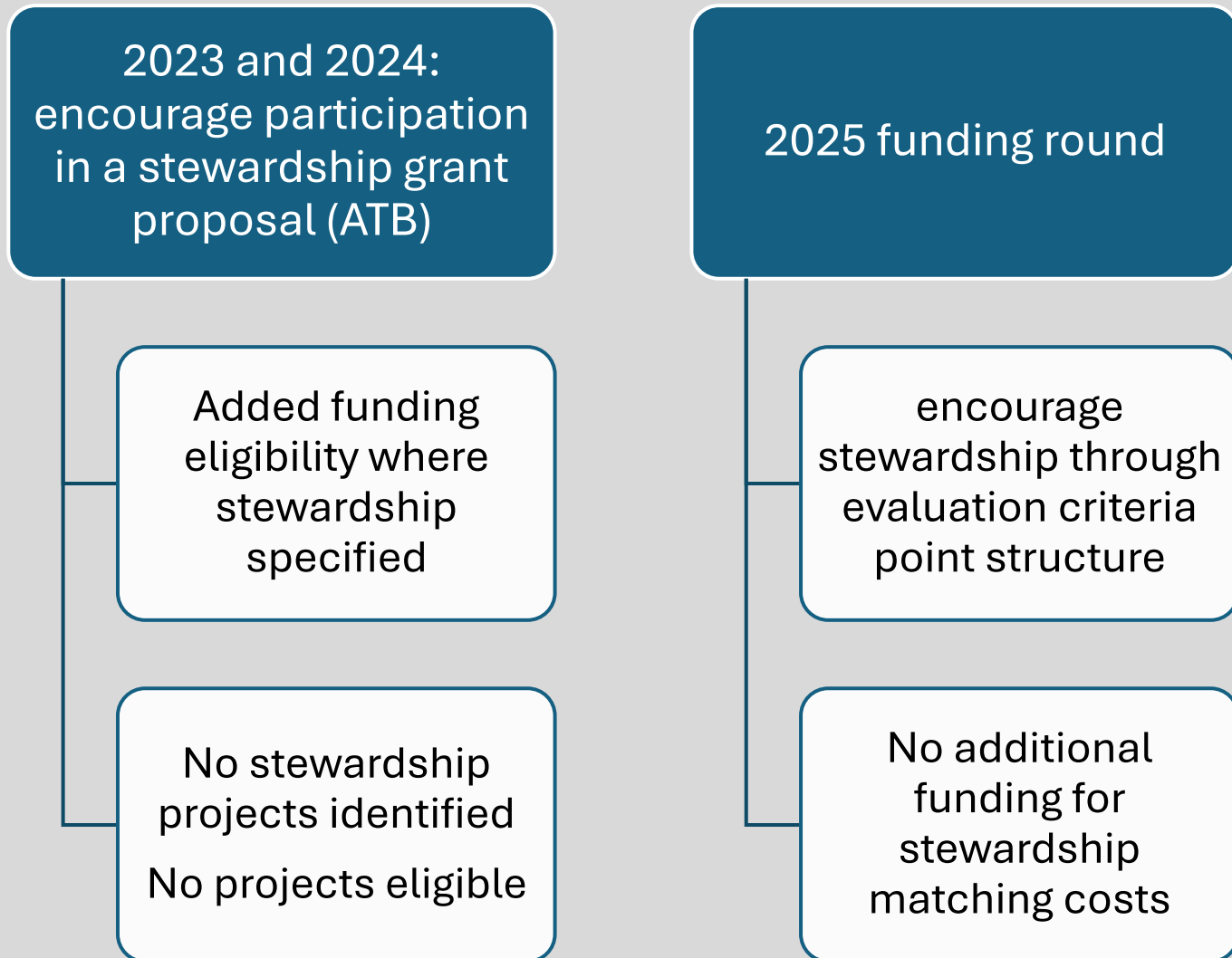
Factor	Low (1)	Medium (3)	High (5)
Location*: Is the project in PCF focus areas for flood or wildfire	In RGA, Town, Village or Rural Development Area AND a focus area	In focus area and PAD, SAPA, APA or Forest Area	Within a five-mile radius of SJTA and inside the State Pinelands Area
T&E Habitats:	No state/federal T&E habitat per NJDEP Landscape Model AND no NJPC and ENSP sightings	T&E habitat exists based upon NJDEP Landscape model and/or NJPC and ENSP sightings	Grassland habitat exists based upon NJDEP Landscape model and/or NJPC and ENSP sightings
Size:	Less than 50 acres	Between 50 and 100 acres	100 acres or more; add 3 additional points if greater than 500 acres
Contiguity:	Less than one mile from preserved open space	Less than one mile from known grassland T&E habitats but not contiguous	Contiguous with preserved habitat or open space
Partner Contribution:	66.7% of acquisition costs	At least 75% of acquisition costs	Greater than 75% of acquisition costs
Maintenance & Stewardship:	No written maintenance /stewardship plan; and no negative reports from stewardship monitoring	Written maintenance/ stewardship plan	Written maintenance/ stewardship plan and history of stewardship success
Environmental Justice Communities Stressors:	One stressor identified	Three or four stressors identified	More than five stressors identified



Add'l Evaluation Notes

- Projects should be in Section 502 acquisition target areas or in one of the Pinelands Commission identified 21 acquisition target areas
- An additional three points will be awarded for projects that are intended to preserve open space with the objective of maintaining grassland habitat
- Environmental Justice Community stressors are identified by NJDEP – project in EJC not necessarily in census block

Funding Structure Changes



Pinelands Conservation Fund Schedule (2025)

P&I
Authorization of
PCF Priorities –
April 25

Deadline for
submitting
proposals :
September 19

Open
application
round : May 1

Project
Recommendations
to P&I : October 31



- PCF round announcement via website and email
 - <https://www.nj.gov/pinelands/landuse/perm/pcf/>
- Electronic submissions only

Home	About	Pinelands National Reserve	Rules	Applications	Planning	Science	Climate Change	Information & Education	PDC Bank
----------------------	-----------------------	--	-----------------------	------------------------------	--------------------------	-------------------------	--------------------------------	---	--------------------------

[Current Projects](#) | [Recently Completed Projects](#) | [Local Conformance](#) | [Permanent Land Protection](#) | [Cultural Resources](#)

[Pinelands Conservation Fund](#) | [PDC Program](#) | [Limited Practical Use Program](#)

HOME / [PLANNING](#) / [PERMANENT LAND PROTECTION](#) / [PINELANDS CONSERVATION FUND](#)


Pinelands Conservation Fund

[Background](#)
[2024 Acquisition Round Offered](#)

Background

The Pinelands Conservation Fund (PCF) was created in 2004 as part of an agreement with the New Jersey Board of Public Utilities to permit the construction and upgrade of an electric transmission line through eastern portions of the Pinelands. Under the agreement, the special fund was established to further the Pinelands protection program and ensure a greater level of protection of the unique resources of the Pinelands Area. The utility that built the transmission lines, Atlantic City Electric (formerly Conectiv), provided \$13 million to establish the Fund. An additional \$3,415,000 was added to the Fund in 2009 because of an amendment to the Comprehensive Management Plan that authorized expansion of the Cape May landfill and through a 2008 Memorandum of Agreement with the New Jersey Turnpike Authority that authorized improvements to the Garden State Parkway. Most recently, an amended agreement with the South Jersey Transportation Authority added \$3,000,000 to the Fund for permanent land protection.

The Pinelands Conservation Fund is dedicated to four types of projects: permanent land protection; conservation planning and research projects; community planning and design initiatives; and education and outreach. Of the original \$13 million, \$6 million was allocated by the Commission to permanent land protection. Additional monies were subsequently allocated to the land acquisition component of the Pinelands Conservation Fund, including \$2.5 million from the Cape May County Municipal Utilities Authority. Eight percent of those funds, or \$200,000, was earmarked for projects in Cape May County. An additional \$915,000 was added to the acquisition component of the Pinelands



Related Links

[Pinelands Conservation Fund Overview Video \(2020\)](#)

Questions?

